

seppi m.

SPARE PARTS LIST

LISTINO RICAMBI / ERSATZTEILLISTE / LISTE DE PIÉCES DE RECHANGE / LISTADO DE REPUESTOS

M351380075 - BMS-F L=150 228 073 045 160

Code	Description	Descrizione	Beschreibung	Description	Descripción
01-0044	Frame BMS-F	telaio BMS-F	Rahmen BMS-F	Chassis BMS-F	Chasis BMS-F
02-0024	rotor	rotore	rotor	rotor	rotor
12-0003	OPT 072,073 and 074 Hydr. transmission	OPT 072,073 e 074 tras. idraulica	OPT 072,073 und 074 Hyd.Getriebe	OPT 072, 073 e 074 Transm. hydraulique	OPT 072,073 e 074 Trans. hidráulica

Released 01/09/2014

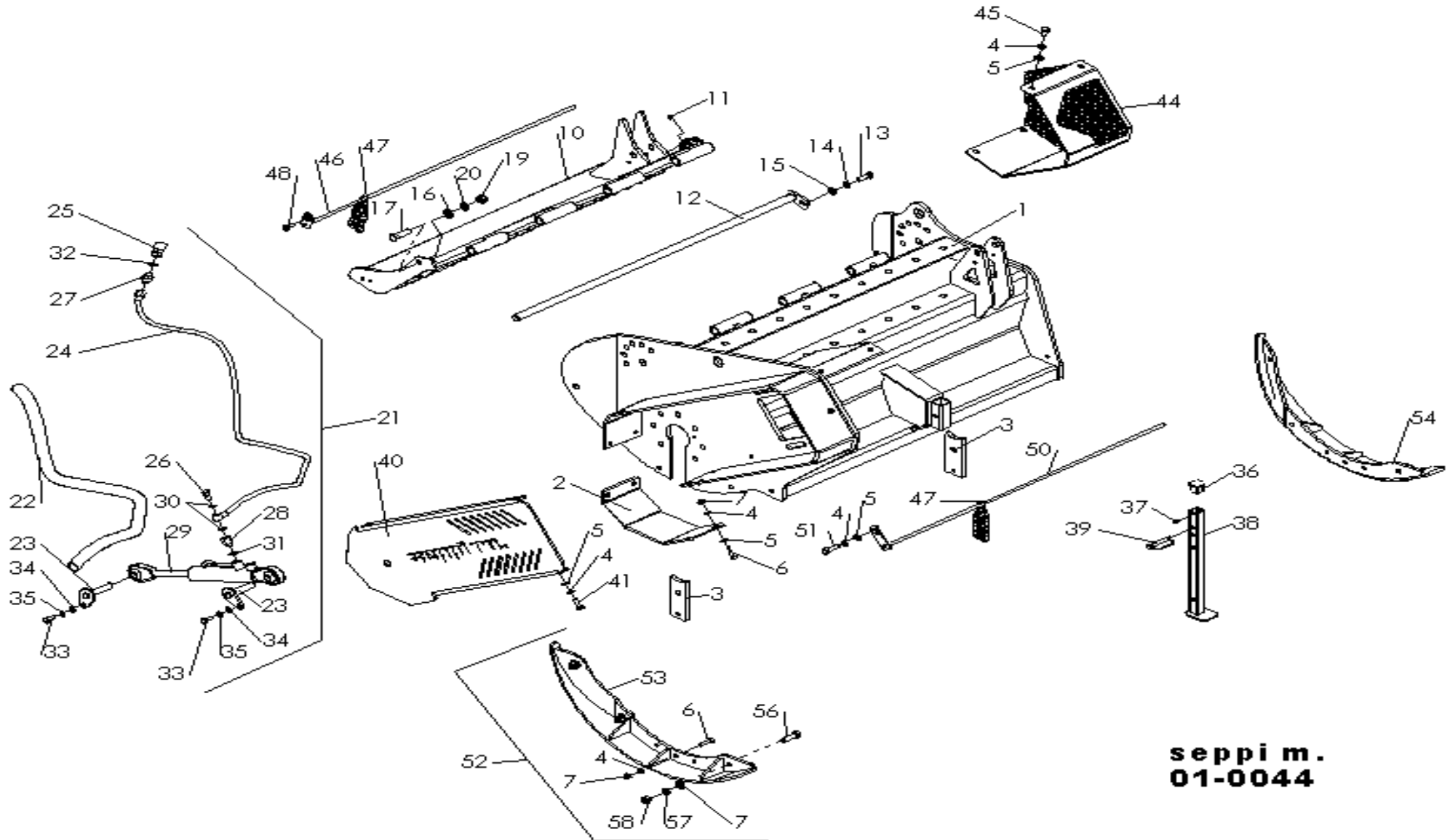
Frame BMS-F

telaio BMS-F

Rahmen BMS-F

Chassis BMS-F

Chasis BMS-F



seppi m.
01-0044

Pos.	Code	Descrizione	Description	Beschreibung	Description	Descripción	Quantity
001	13801211	TELAIO CPL BMS-F L=150 X GR.TRASM PARKE	FRAME CPL BMS-F L=150XTRANSM.UNIT PARKE	KPL.RAHMEN BMS-F L=150 F.GR.ANTR.PARKE	CHAS.CPL BMS-F L=150 P.GR.TRASM PARKE	CHASIS CPL BMS-F L=150XGR.TRANS PARKE	1
002	13801125	CHIUSURA INFERIORE X BMS -F	CPL CLOSING	UNTERER VERSCHLUSS F. BMS-F	FERMETURE P.PROTECT.COURROIES CPL	CIERRE RANURA LATERAL	1
003	13801109	LINGUELLA PER BMS-F LATO TRAS	FEATHER FOR BMS-F	PASSFEDER F. BMS-F ANTRIEBSEITE	LANGUETTE BMS-F	LENGUETA PARA BMS-F	2
004	97494931	RONDELLA DIN 127B ELSP-10,2X18,1X2,2 Z	WASHER ELSP ASA B- 27 - 10,2X18,1X2,2 ZN	SCHEIBE ELSP ASA B-27 - 10,2X18,1X2,2 ZN	RONDELLE ELS ASA B- 27 - 10,2X18,1X2,2 Z	ARANDELA ELSP ASA B-27-10,2X18,1X2,2 ZN	15
006	96607821	VITE TE M10X 35 UNI 5739 8.8 ZN	BOLT TE M 10X035 UNI 5739 8.8 ZN	SCHRAUBE TE M 10 X 35 UNI 5739 8.8 ZN	VIS TE M 10X035 UNI 5739 8.8 ZN	TORNILLO TE M10X 35 UNI 5739 8.8 ZN	6
007	97971821	DADO AUTOBLOC.BASSO M10-6S UNI7474	LOW.SELFBLOCK.NUT M 10-6S UNI7474	SELBSTSICHER.MUTTER M10-6S UNI7474 NIED.	ECROU AUTOSERR.M 10-6S UNI7474	TUERCA AUTO BLOQ. BAJA M 10-6S UNI7474	6
038	13011009	PIEDINO DI SOSTEGNO SMO,SMW/O/A,SML	SUPPORT FOOT SMO,SMW/O/A,SML	STUETZFUSS KPL. SMO,SMW/O/A,SML	BEQUILLE SMO,SMW/O/A,SML	PIE SOPORTE SMO,SMW/O/A,SML	1
040	13810052	COPERCHIO PROTEZIONE CNGHIE BMS-F CPL	COVER FOR BELT PROTECTION	DECKEL F. KEILRIEMENSCHUTZ BMS-F	COUVERCLE POUR PROT.COURROIE	CARTER PROT. CORREAS	1
041	96607721	VITE TE M10X 30 UNI 5739 8.8 ZN	BOLT TE M 10X030 UNI 5739 8.8 ZN	SCHRAUBE TE M 10 X 30 UNI 5739 8.8 ZN	VIS TE M 10X030 UNI 5739 8.8 ZN	TORNILLO TE M10X 30 UNI 5739 8.8 ZN	4
045	96607621	VITE TE M10X 25 UNI 5739 8.8 ZN	BOLT TE M 10X025 UNI 5739 8.8 ZN	SCHRAUBE TE M 10 X 25 UNI 5739 8.8 ZN	VIS TE M 10X025 UNI 5739 8.8 ZN	TORNILLO TE M10X 25 UNI 5739 8.8 ZN	4
045	13810078	COPERCHIO MOTORE F12-80 BMS-F CPL	ENGINE COVER F12-80 BMS-F CPL	DECKEL MOTOR F12-80 BMS-F KPL	COUVERCLE MOTEUR F12-80 BMS-F CPL	TAPA DEL MOTOR F12-80 BMS-F CPL	1
046	13808036	ASTA CATENE CPL 150	CHAIN-HOLDER BAR (HATCH) (L= 150)	STAB F. KETTENSCHUTZ KPL. L=150	BARRRE PORTE-CHAINE (CAPOT) (L= 150)	BARRA CPL. PARA CADENAS (CAPOT) (L= 150)	1
047	17410022	CATENA DI PROTEZIONE 9 MAGLIE FILO 7	CHAIN PROT. 9 MAGLIE LINK 7	SCHUTZKETTE 9-MASCHEN 7 REIHEN	CHAINE DE PROT. 09 CHAIN MAIL 7	CADENA DE PROTECC. 9 ESLABONES HILO 7	90
048	97345221	VITE TSEI M10X 30 UNI 5933 10.9 ZN	BOLT	SCHRAUBE TSEI M 10 X 30 UNI 5933 8.8 ZN	VIS	TORNILLO TSEI M10X 30 UNI 5933 8.8 ZN	1
050	17610009	ASTA CATENE CPL L=150	CHAIN HODER BAR L=150	STAB F. KETTENSCHUTZ KPL. L=150	BARR.CHAINE L=150	BARRA PARA CADENAS L=150	1
051	96607621	VITE TE M10X 25 UNI 5739 8.8 ZN	BOLT TE M 10X025 UNI 5739 8.8 ZN	SCHRAUBE TE M 10 X 25 UNI 5739 8.8 ZN	VIS TE M 10X025 UNI 5739 8.8 ZN	TORNILLO TE M10X 25 UNI 5739 8.8 ZN	1
052	13807020	GR.SLITTE BMS-F OPT 345	SKID UNIT BMS-F OPT 345	GR. KUFEN BMS-F OPT 345	GR.PATINS BMS-F OPT 345	GR.PATINES BMS-F OPT 345	1
053	13807021	SLITTA CPL BMS-F SX RINF	REINFORCED LH SKID CPL BMS-F	KPL. KUFE BMS-F LINKS VERSTAERKUNG	PATIN CPL BMS-F GAUCHE RENF	PATÍN CPL BMS-F IZQ REF	1
054	13807022	SLITTA CPL BMS-F DX RINF	REINFORCED RH SKID CPL BMS-F	KPL. KUFE BMS-F RECHTS VERSTAERKUNG	PATIN CPL BMS-F DROIT RENF	PATÍN CPL BMS-F DER REF	1
056	96612521	VITE TE M14X 45 UNI 5739 8.8 ZN	BOLT TE M 14X045 UNI 5739 8.8 ZN	SCHRAUBE TE M 14 X 45 UNI 5739 8.8 ZN	VIS TE M 14X045 UNI 5739 8.8 ZN	TORNILLO TE M14X 45 UNI 5739 8.8 ZN	6
057	97495131	RONDELLA DIN 127B ELSP-14,2X24,1X3 Z	WASHER ELSP ASA B- 27 - 14,2X24,1X3 ZN	SCHEIBE ELSP ASA B- 27 - 14,2X24,1X3 ZN	RONDELLE ELS ASA B- 27 - 14,2X24,1X3 ZN	ARANDELA ELSP ASA B-27-14,2X24,1X3 ZN	6
058	97972321	DADO AUTOBLOC.BASSO M14-6S UNI7474	LOW.SELFBLOCK.NUT M 14-6S UNI7474	SELBSTSICHER.MUTTER M14-6S UNI7474 NIED.	ECROU AUTOSERR.M 14-6S UNI7474	TUERCA AUTO BLOQ. BAJA M 14-6S UNI7474	6

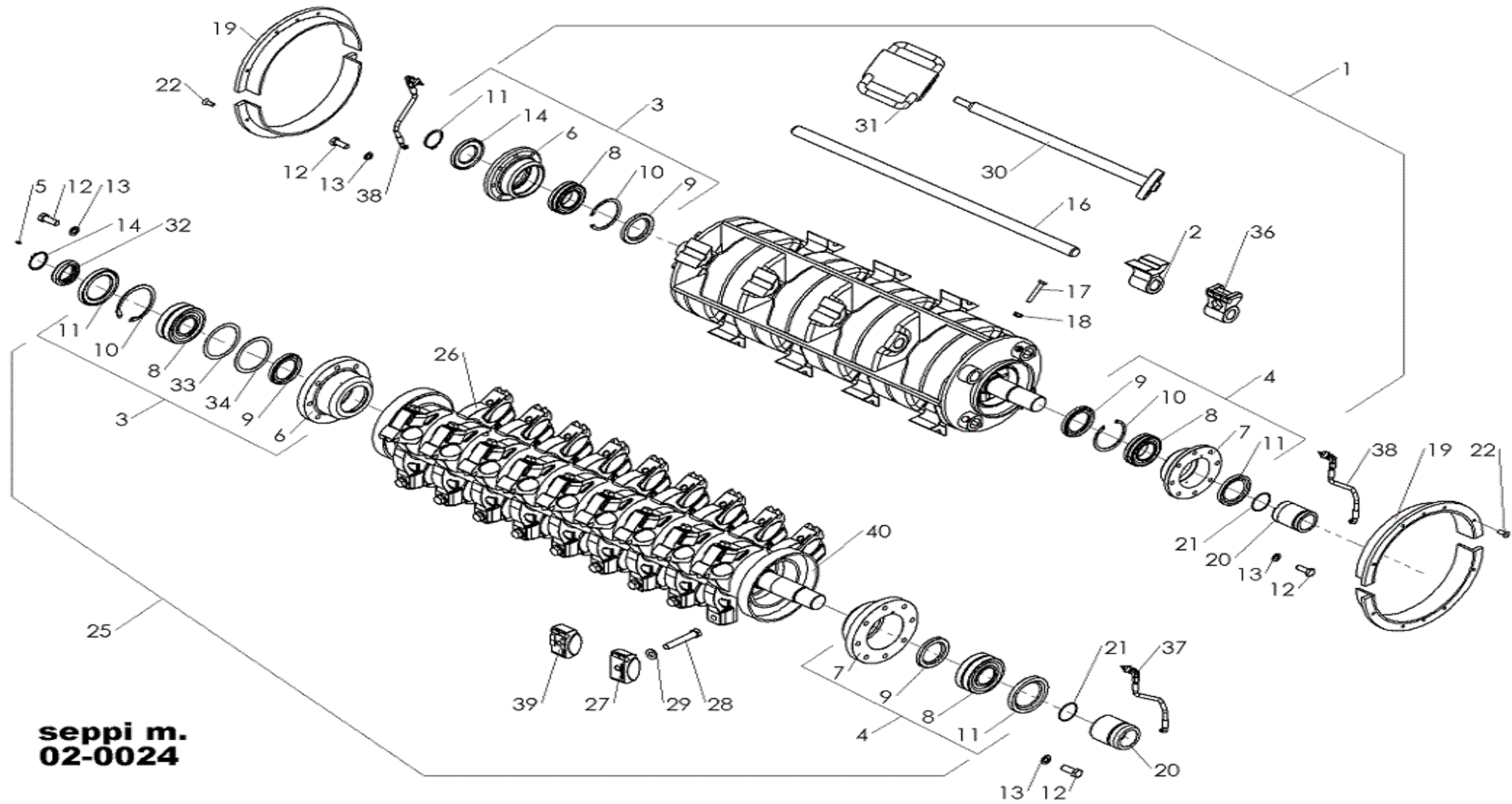
rotor

rotore

rotor

rotor

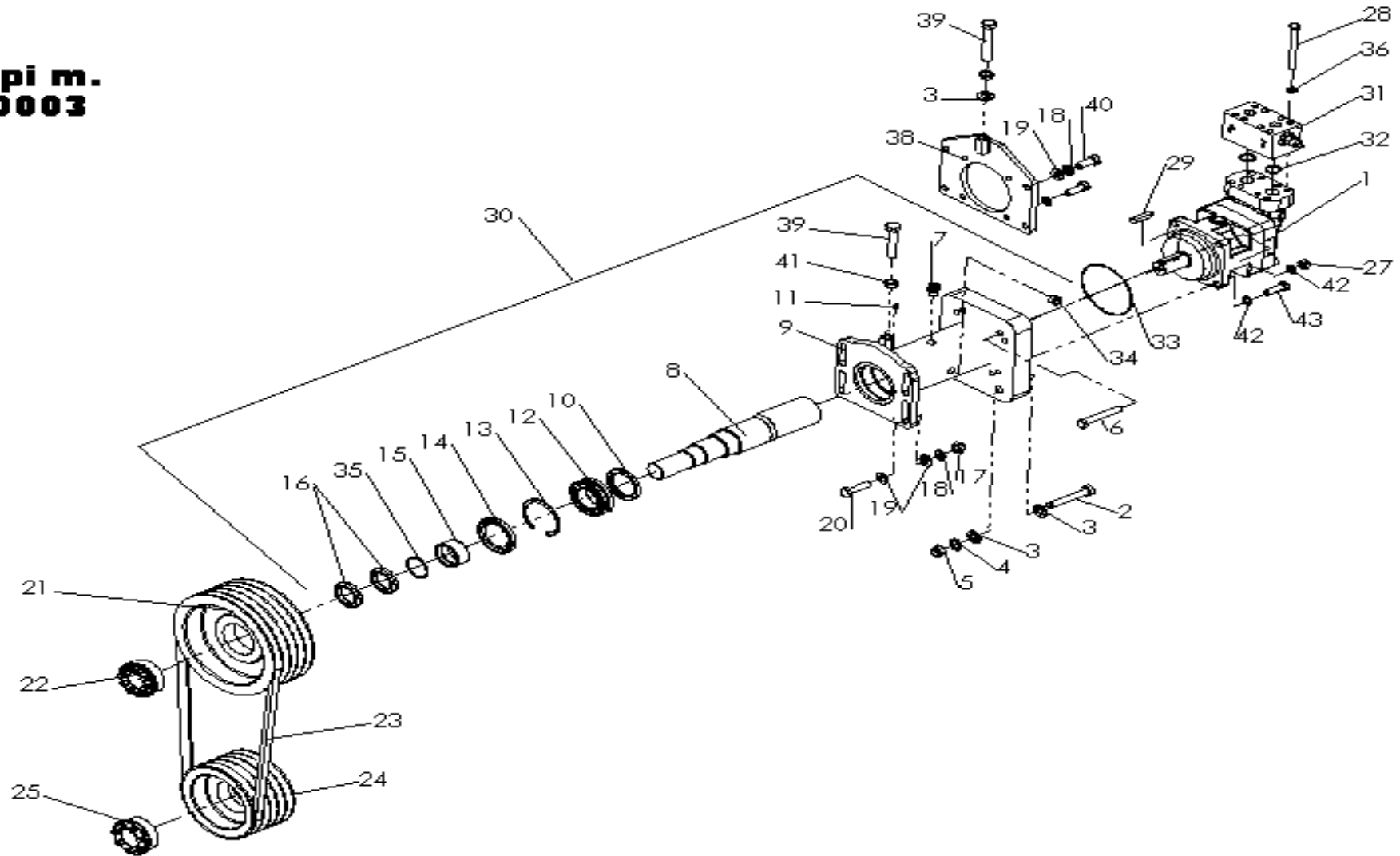
rotor



seppi m.
02-0024

Pos.	Code	Descrizione	Description	Beschreibung	Description	Descripción	Quantity
003	19702057	SUPPORTO CPL. ROTORE CON BATTUTA	CPL SUPPORT F.ROTOR WHIT RABBET	KPL. ROTORHALTER MIT ANSCHLAG	SUPPORT CPL.P.ROTOR AVEC FEUILLURE	SOPORTE CPL. ROTOR CON RANURA	1
004	19702058	SUPPORTO CPL. ROTORE SENZA BATTUTA	CPL SUPPORT FOR ROTOR WITHOUT RABBET	KPL. ROTORHALTER OHNE ANSCHLAG	SUPPORT CPL POUR ROTOR SANS FEUILLURE	SOPORTE CPL. ROTOR SIN RANURA	1
005	97036611	INGRASS DIRITTO UNI 7663 AM 6X1(5-8CH7	GREASE NIPPLE UNI 7663 AM 6-5.8	SCHMIERNIPPEL UNI 7663 AM 6X1 (5-8)	GRAISSEUR UNI 7663 AM 6-5.8	LUBRICADOR UNI 7663 AM 6X1 (5-8CH7	1
006	19702054	SUPP.CUSC.ROTORE CON GOLA DIA.120	SUPPORT support FOR ROTOR W.PIPE DIA.120	LAGERHALTER F. ROTOR MIT RILLE DM 120	SUPPORT ROULEMENT P. ROTOR A.TUBE DIA 120	SOPORTE COJINETE ROTOR CON BOCA DIA.120	1
007	19702130	SUPP.CUSC.ROTORE SENZA GOLA DIA.120	SUPP.BEAR.F.ROTOR NO PIPE DIA. 120	LAGERHALTER F. ROTOR OHNE RILLE DM 120	SUPP.ROULEM.P.ROT.SANS TUBE DIA 120	SOPORTE COJINETE ROTOR SIN BOCA DIA.120	1
008	19702059	CUSCINETTO 22311 E 55X120X43 OR.RULLI	support 22311 E 55X120X43 OR.RULLI	VERST. ROLLENLAGER 22311 E 55X120X43	ROULEMENT 22311 E 55X120X43 OR.RULLI	RODAMIENTO 22311 E 55X120X43 RODILLOS	2
009	19503016	ANELLO DI TENUTA 65 X100 X10	OIL SEAL 65 X100 X10	DICHTUNGSRING 65 X100 X10	BAGUE ETACH. 65 X100 X10	RETEN 65 X100 X10	2
010	96876276	ANELLO EL. PER FORI 120X4	EL.RING F.HOLES 120X4	SEEGERRING F.LOECHER 120X4	BAGUE ARRET P.TROUS 120X4	RETEN EL.P.ORIFIC. 120X4	1
011	19702060	ANELLO DI TENUTA 80 X120 X13	OIL SEAL 80 X120 X13	DICHTUNGSRING 80 X120 X13	BAGUE ETACH. 80 X120 X13	RETEN 80 X120 X13	2
012	96634533	VITE TE M16X 40 UNI 5739 10.9 NERA	BOLT TE M 16X040 UNI 573910.9 BLACK	SCHRAUBE TE M 16 X 40 UNI 5739 10.9 SCHW	VIS TE M 16X040 UNI 573910.9 NOIRE	TORNILLO TE M16X 40 UNI 5739 10.9 NEGRO	16
013	97495234	RONDELLA DIN 127B ELSP-16,2X27,4X3,5 N	WASHER ELSP ASA B- 27 - 16,2X27,4X3,5 N	SCHEIBE ELSP ASA B- 27 - 16,2X27,4X3,5 N	RONDELLE ELS ASA B- 27 - 16,2X27,4X3,5 N	ARANDELA ELSP ASA B-27-16,2X27,4X3,5 N	16
014	96868076	ANELLO EL. PER ALBERI 55X2	ELASTIC RING FOR SHAFTS 55X2	WELLENSPANNRING 55X2	BAGUE ARRET POUR ARBRES 55X2	RETEN EL.P.EJES 55X2	1
020	19702055	DISTANZIALE D55 X D80 L=89 LATO PULEGGIA	SPACER LATO PULLEY L=89	DISTANZBUECHSE SEITE KEILRIEMENSCH. L=89	ENTRETOISE LATO POULIE L=89	RETEN LADO POLEA L=89	1
021	97284280	ANELLO O-RING OR 139/3218 55,25X2,62	OIL SEAL OR 139/3218 55,25X2,62	O-DICHTUNGSRING 139/3218 55,25 X 2,62	BAGUE ETACH. OR 139/3218 55,25X2,62	RETEN 139/3218 55,25X2,62	1
025	13802058	GR. ROTORE F168 L=150 OPT378+228	GR.ROTOR BMS-F 150 UT.F.2 PLACC-OPT228	ROTORGRUPPE BMS-F L=150 (OPT 228)	GR.ROTOR BMS-F 150 UT.F.2 PLACC-OPT228	GR.ROTOR BMS-F 150 UT.F.2 PLACC-OPT228	1
027	17602006	SUPPORTO FRESATO PER UTENSILE MINIFORST	HAMMER SUPPORT MINIFORST	SCHLAEGELHALTER MINIFORST	SUPPORT MARTEAU MINIFORST	SOPORTE MARTILLO MINIFORST	30
027	17602005	UTENSILE MINI DUO OPT 228	CARBIDE TIPS HAMMER MINI DUO (OPT 228)	WERKZEUG MINI DUO M.HARTMETALL (OPT 228)	MARTEAU MINI DUO AVEC TUNGSTENE (OPT 228)	MARTILLO DE CARBURO MINI DUO (OPT 228)	30
028	96615525	VITE TE M16X100 X 1,5 10.9 NERA U5738	BOLT TE M16 X 100 X 1,5 10,9 BLACK	SCHRAUBE TE M 16 X 100 X 1,5 10,9 SCHW	VIS TE M16X100 X 1,5 10,9 NOIR	TORNILLO TE M16X100X1,5 10.9 NEGRO U5738	30
029	97092171	ROSETTA EL. CONICA UNI 8836 16,4X32X2,8	SPRING WASHER UNI 7064 16,4X32X2,8	KONISCHE FEDERSCHEIB.UNI7064 16,4X32X2,8	RONDELL 7064 16,4X32X2,8	ARANDELA CONICA EL. UNI 7064 16,4X32X2,8	30
032	19702056	DISTANZIALE D55 X D80 L=18 LATO MOZ CORT	SPACER SHORT HUB SIDE L=18	DISTANZBUECHSE SEITE KURZE NABE L=18	ENTRET.COTE DU MOYEU COURT L= 18	RETEN LADO CUBO CORTO L=18	1
033	98047716	ANELLO DI SPALLAMENTO 100 X120 X2	SPACER 100 X120 X2	DISTANZSCHEIBE 100 X 120 X 2	BAGUE D'EPOULEMENT 100 X120 X2	RETEN DE APOYO 100 X120 X2	1
034	98048316	ANELLO DI SPALLAMENTO 100 X120 X1	SPACER 100X120X1	DISTANZSCHEIBE 100X120X1	BAGUE D'EPOULEMENT 100X120X1	RETEN DE APOYO 100X120X1	1
037	17902217	GR TUBETTO L=280 INGRASS CUSCIN ROTORE	GREASE NIPPLE L=280	KPL.SCHLAUCH L=280 SCHMIERUNG/ROTORLAGER	TUBE GRAISSEUR L=280 ROULEMENT ROTOR	TUBO L= 280 LUBRICACION COJINETE ROTOR	1

seppi m.
12-0003



Pos.	Code	Descrizione	Description	Beschreibung	Description	Descripción	Quantity
001	19512001	MOTORE IDR PARKER F12-60 MF-IH-K	HYDR.MOTOR VOLVO F 12-60 MF-IH-K	HYDR.MOTOR VOLVO F 12-60 MF-IH-K	MOTEUR HYDR.VOLVO F 12-60 MF-IH-K	MOTOR HIDR.VOLVO F 12-60 MF-IH-K	1
003	97093611	ROSETTA PIANA CARPENT. M16 ZN UNI5714	SMOOTH WASHER CARPENT.X M16 UNI 5714 ZN	GLATTE SCHEIBE F. M16 UNI 5714 ZN	RONDELL. LISSE CARPENT.X M16 UNI 5714 ZN	ARANDELA PLANA M16 UNI 5714 ZN	1
006	96610121	VITE TE M12X 40 UNI 5739 8.8 ZN	BOLT TE M 12X040 UNI 5739 8.8 ZN	SCHRAUBE TE M 12 X 40 UNI 5739 8,8 ZN	VIS TE M 12X040 UNI 5739 8.8 ZN	TORNILLO TE M12X 40 UNI 5739 8.8 ZN	4
018	97495131	RONDELLA DIN 127B ELSP-14,2X24,1X3 Z	WASHER ELSP ASA B- 27 - 14,2X24,1X3 ZN	SCHEIBE ELSP ASA B- 27 - 14,2X24,1X3 ZN	RONDELLE ELS ASA B- 27 - 14,2X24,1X3 ZN	ARANDELA ELSP ASA B-27-14,2X24,1X3 ZN	4
019	97093311	ROSETTA PIANA CARPENT. M14 ZN UNI5714	SMOOTH WASHER M 14 UNI 5714 ZN	GLATTE SCHEIBE F. M 14 UNI 5714 ZN	RONDELLE LISSE M 14 UNI 5714 ZN	ARANDELA PLANA M14 UNI 5714 ZN	4
021	13003017	PULEGGIA 5SPB 180 FORO 80	PULLEY 5SPB 180	KEILRIEMENSCHLEIBE 5SPB 180 IN. 80	POULIE 5SPB 180	POLEA 5SPB 180 ORIFICIO80	2
022	13003005	CALETTATORE VIBLOCK VK 156 35 X 80	TAPER LOCK VIBLOCK VK 156 35 X 80	SPANNBUECHSE VIBLOCK VK 156 35 X 80	MOYEU VIBLOCK VK 156 35 X 80	JUNTA VIBLOCK VK 156 35 X 80	1
023	17903141	CINGHIA QUAD-POWER III XPB 1590	BELT QUAD-POWER III TIPO XPB 1590	RIEMEN QUAD-POWER III TYP XPB 1590	COURROIE QUAD-POWER III TIPO XPB 1590	CORREA QUAD-POWER III TIPO XPB 1590	5
025	48030240	CALETTATORE VIBLOCK VK 156 50 X 80	TAPER LOCK VIBLOCK VK 156 50 X 80	SPANNBUECHSE VIBLOCK VK 156 50 X 80	MOYEU VIBLOCK VK 156 50 X 80	JUNTA VIBLOCK VK 156 50 X 80	1
026	97495031	RONDELLA DIN 127B ELSP-12,2X21,2X2,5 Z	WASHER ELSP ASA B- 27 - 12,2X21,2X2,5 ZN	SCHEIBE ELSP ASA B-27 - 12,2X21,2X2,5 ZN	RONDELLE ELS ASA B- 27 - 12,2X21,2X2,5 Z	ARANDELA ELSP ASA B-27-12,2X21,2X2,5 ZN	4
031	19512019	BL.VALVOLE INTEG. BYP SOVRAPR F12-40/60					1
031	19512002	BLOCCO VALV.BYPASS SOVRAPRES. F12-40/60	BYPASS VALVE OVER-PRESSURE F.F 12-40/60	UEBERDRUCKVENTIL BYPASS FUER F 12-40/60	VALVE BYPASS SURPRESSION P.F 12-40/60	VALVULA BYPASS SOBREPRES.PARA F 12-40/60	1
036	97494931	RONDELLA DIN 127B ELSP-10,2X18,1X2,2 Z	WASHER ELSP ASA B- 27 - 10,2X18,1X2,2 ZN	SCHEIBE ELSP ASA B-27 - 10,2X18,1X2,2 ZN	RONDELLE ELS ASA B- 27 - 10,2X18,1X2,2 Z	ARANDELA ELSP ASA B-27-10,2X18,1X2,2 ZN	8
038	13803019	FLANGIA CPL.CENTR.MOT F12-40/60 X BMS-F	FLANGE	FLANSCH F.ZENTR. MOTOR 12-40/60 BMS-F	FLANGE	BRIDA	1
040	96612321	VITE TE M14X 35 UNI 5739 8.8 ZN	BOLT TE M 14X035 UNI 5739 8.8 ZN	SCHRAUBE TE M 14 X 35 UNI 5739 8,8 ZN	VIS TE M 14X035 UNI 5739 8.8 ZN	TORNILLO TE M14X 35 UNI 5739 8.8 ZN	4